

the All in One™ Cordless

Instruction Book – LSB150



Breville®



CONTENTS

- 2 Limited Product Warranty
- 2 Breville® Recommends Safety First
- 8 Components
- 9 Functions
- 12 Care & Cleaning
- 13 Troubleshooting



LIMITED PRODUCT WARRANTY

Breville's warranty for this product covers the repair or replacement if it's found to be defective due to faulty materials, workmanship, or function within the warranty period. All legal warranty rights under applicable national legislation will be respected and will not be impaired by our warranty. For details on length of warranty, to obtain a printed copy or to read full terms and conditions please scan the QR code or visit www.breville.com. Alternatively, call the Breville Service Centre (see back cover for contact details).

QR149

BREVILLE® RECOMMENDS SAFETY FIRST

At Breville® we are very safety conscious. We design and manufacture consumer products with the safety of you, our valued customer, foremost in mind. In addition we ask that you exercise a degree of care when using any electrical appliance and adhere to the following precautions.

IMPORTANT SAFEGUARDS READ ALL INSTRUCTIONS BEFORE USE AND SAVE FOR FUTURE REFERENCE

- Carefully read all instructions before operating the Breville stick blender for the first time and save for future reference.
- Remove and safely discard any packaging material and promotional labels before using the stick blender for the first time.
- Do not immerse the motor body, USB cable or USB power adaptor (not included) in water or any other liquid.

- Disconnect the USB cable before assembling or cleaning. Do not use the stick blender while connected to the USB cable and power adaptor.
- Do not carry the stick blender by the USB cable; instead, make sure to lift or move the stick blender by holding the motor body.
- Do not pull the USB cable itself when disconnecting the cable from the USB port; instead, grasp the plastic part of the USB plug and pull it to disconnect.
- Do not twist or pull the USB cable around sharp edges or corners.
- Ensure that the USB port is free of any debris before inserting USB plug.
- Switch off the power outlet, remove the USB power adaptor (not included) and unplug the USB cable from the stick blender before removing attachment or cleaning.
- Do not let the USB cable hang over the edge of a table or counter, touch hot surfaces or become knotted.
- Be aware of the risk that the USB charging port may be short circuited by metal objects.
- Recommended ambient temperature range for charging the battery of the stick blender is 10–40°C.
- Do not expose the stick blender to extreme temperatures, excessive heat or fire. This may cause the lithium-ion battery pack inside the stick blender to explode and create a fire hazard.
- Do not use fire or other means to destroy the stick blender. The lithium-ion battery pack may explode when exposed to high temperatures or fire.
- Do not use the stick blender if it has been damaged or modified.
- Damaged or modified batteries may result in fire, explosion or risk of injury.
- Under abusive/extreme conditions leaks from battery cells can occur. If the liquid gets on the skin, remove contaminated clothes and rinse skin with plenty of clean water for 15 minutes and seek medical aid. If the liquid gets into eyes, flush eyes with plenty of clean water for at least 15 minutes and seek medical aid.
- Do not place the stick blender near the edge of a bench or table during operation. Ensure the surface is level, clean and free of water, flour, etc.
- Do not place the stick blender on or near a hot gas or electric burner, or where it could touch a heated oven.

- If using the stick blender to blend hot food in a saucepan, remove the saucepan from the heat source and ensure the body of stick blender is also kept away from any heat source.
- Keep hands, hair, clothing, spatulas, and other utensils away from the attachments during operation to reduce the risk of injury to persons and/or damage to the stick blender.
- Always make sure the stick blender is completely and properly assembled before operating.
- Always ensure the stick blender attachment is securely fitted onto the motor body before operating.
- Ensure the stick blender is turned off by releasing the control trigger and wait until the motor and blades have completely stopped before attempting to move the stick blender, disassembling, or attaching any accessories, cleaning, or storing.
- Care should be taken when handling the stick blender and attachments, emptying the chopping bowl and during cleaning as the blades are very sharp and should be kept out of reach of children.
- Do not use attachments other than those provided with the stick blender.
- Do not attempt to operate the stick blender by any method other than those described in this booklet.
- When mixing liquids, use the blending jug provided and mix small quantities at a time to reduce spillage.
- Do not process hot or boiling liquids or ingredients in the blending jug or chopping bowl – allow liquids or food to completely cool down before placing into the blending jug or chopper bowl.
- Do not operate the stick blender continuously for more than 1 minute. Allow the motor to rest for 1 minute between each use.
- Do not mix dry, thick, or heavy mixtures for more than 30 seconds. Stop the operation and stir the ingredients before continuing. Allow the motor to rest for 1 minute between each use.
- If food becomes lodged around the processing blade or in the blade guard, release the control trigger to completely stop the processing blade. Use a spatula to dislodge the food. Do not use fingers as the blades are sharp.
- Do not remove the stick blender from ingredients during operation. Ensure the stick blender is switched off and has stopped turning before removing, to avoid contact with moving blade or attachment.


- Do not leave the stick blender unattended when in use.
- Do not allow children to use the stick blender without supervision.
- Do not use the stick blender with wet hands.
- Do not place the stick blender in direct sunlight. Colour fading and discolouration may occur when the stick blender is consistently exposed to UV light.
- Recommended temperature range for the storage of the stick blender is 10–30°C.
- Keep the stick blender clean. Follow the cleaning instructions provided in this book. Refer to Care & Cleaning section.
- Before disposing of the stick blender, the lithium-ion battery must be removed from the stick blender. The stick blender must be disconnected from the mains power supply when removing the battery.
- The battery is non-replaceable and should be safely and properly disposed of. Check your local waste management authority or environmental agency for guidelines on lithium-ion battery and e-waste collection. Please refer to instructions in the Battery Disposal section.

IMPORTANT SAFEGUARDS FOR ALL ELECTRICAL APPLIANCES

- Fully unwind the power cord before use.
- Connect only to a 230V or 240V power outlet.
- Do not let the power cord hang over the edge of a bench or table, touch hot surfaces or become knotted.
- To protect against electric shock, do not immerse the power cord, power plug or appliance in water or any other liquid or allow moisture to come in contact with the part, unless it is recommended in the cleaning instructions.
- It is recommended to regularly inspect the appliance. To avoid a hazard do not use the appliance if power cord, power plug or appliance becomes damaged in any way. Return the entire appliance to the nearest authorised Breville Service Centre for examination and/or repair.
- The appliance is not intended for use by persons (including children) with reduced physical, sensory, or mental capabilities, or lack of experience and knowledge, unless they have been given supervision or instruction concerning use of the appliance by a person responsible for their safety.

- Children should be supervised to ensure that they do not play with the appliance.
- Any maintenance other than cleaning should be performed at an authorised Breville Service Centre.
- This appliance is for household use only. Do not use this appliance for anything other than its intended use. Do not use in moving vehicles or boats. Do not use outdoors. **Misuse may cause injury.**
- The installation of a residual current device (safety switch) is recommended to provide additional safety protection when using electrical appliances. It is advisable that a safety switch with a rated residual operating current not exceeding 30mA be installed in the electrical circuit supplying the appliance. See your electrician for professional advice.
- During electrical storms, the appliance should be disconnected from the power source at the wall socket to prevent any electrical surges that may arise during the storm, and which may inadvertently cause damage to the appliance and its electronic componentry.
- Always turn the appliance to the off position, switch off at the power outlet and unplug at the power outlet when the appliance is not in use.
- Before cleaning, always turn the appliance to the off position, switch off at the power outlet, unplug at the power outlet and remove the power cord, if detachable, from the appliance and allow all parts to cool.
- Do not place this appliance on or near a heat source, such as hot plate, oven, or heaters.
- Position the appliance at a minimum distance of 20cm away from walls, curtains and other heat or steam sensitive materials and provide adequate space above and on all sides for air circulation.

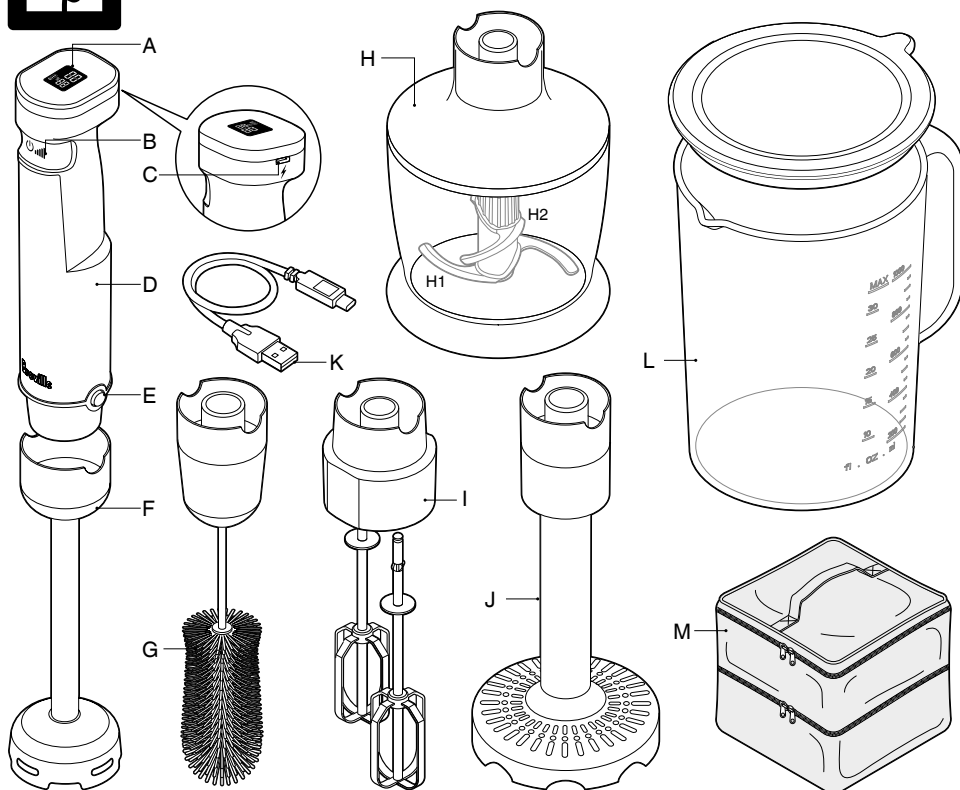
PLEASE READ THE FOLLOWING BEFORE CHARGING THE STICK MIXER USING AN USB POWER ADAPTOR

- Use only an electrical safety compliant USB power adaptor (not included) with DC 5V 3A output and Regulatory Compliance Mark .
- Appliance must only be supplied at safety extra low voltage corresponding to the marking on the stick blender.
- Fully unwind the USB cable before attaching to the stick blender for charging.
- Connect the stick blender using the USB cable provided.
- The USB power adaptor should be plugged into the power outlet away from a sink or hot surface.
- Do not use an extension cord. Plug USB power adaptor directly into the power outlet.
- To protect against electric shock, do not immerse the USB cable or stick blender in water or any other liquid or allow moisture to come in contact with the part, unless it is recommended in the cleaning instructions.
- Do not operate a damaged USB power adaptor and replace immediately.
- It is recommended to regularly inspect the stick blender and USB cable. To avoid a hazard, do not use the stick blender or USB cable if they become damaged in any way. If the stick blender is faulty, return the stick blender and the USB cable provided to the nearest authorised Breville service centre for examination and or repair.
- During electrical storms, while charging, the stick blender should be disconnected from the USB power adaptor at the power socket to prevent any electrical surges that may arise during the storm, and which may inadvertently cause damage to the stick blender and its electronic components.

FOR HOUSEHOLD USE ONLY SAVE THESE INSTRUCTIONS



COMPONENTS



A. LED Screen

- Battery capacity (%) and variable speed indicator (00 -10)

B. Pressure Speed Control Trigger

- LED Screen Display:
Press and release to activate.
- Variable Speed:
Adjust pressure for different speeds.
- Pulse Function:
Press and release in quick succession.

C. USB-C Charging Port

D. Motor Body

E. Eject Buttons

- Press simultaneously to remove attachment.

F. Stainless Steel Blending Attachment

G. Silicone Brush Attachment

H. 500ml Chopping Bowl with Lid

Dual & quad blades

H1 - Removable spindle with stainless steel lower dual blade. Can be used on its own when dual blade operation is required, or assembled with the stainless steel top blade (H2) for quad blade operation.

H2 - Stainless steel top blade becomes quad blade when assembled.

I. Beater Attachment

J. Masher Attachment

K. USB-A to USB-C Charging Cable

L. 1L Blending Jug with Silicone Lid

Silicone lid can also be used as anti-slip mat

M. Storage Bag



WARNING

- Blades are extremely sharp and should be kept out of reach from children. Handle with care.
- Ensure the pressure speed control trigger is not pressed at any time when attaching or removing parts or accessories.



FUNCTIONS

BEFORE FIRST USE

1. Remove all packaging material and promotional labels.
2. Check for any missing or damaged parts as per the components list.
3. Clean all parts according to the Care & Cleaning section.
4. When using the stick blender for the first time, connect to a USB power adaptor (not included) to activate the unit.
5. The LED screen will illuminate the battery icon to indicate the battery is charging.



NOTE

The stick blender comes with a USB charging cable only. A USB power adaptor is not included.



NOTE

Fully charge the battery before the first use and avoid completely discharging the battery to maximise battery longevity.

CHARGING THE BATTERY

1. Ensure no attachments are connected to the motor body. Connect the provided USB charging cable to a USB power adaptor (not included) and the USB charging port of the stick blender. Plug the power adaptor into a 230V or 240V power outlet. Alternatively, if equipped, plug the provided USB charging cord into a USB charging outlet directly.
 2. The LED screen will illuminate the battery icon to indicate the battery is charging. Once all bars on the battery icon illuminate solid, the stick blender is fully charged.
- The stick blender will not operate whilst charging.
 - Full Charge: Battery charge between 95-100% is considered fully charged.
 - The stick blender can be fully charged from

empty in approximately 2 hours 30 minutes using a DC 5V 3A output USB power adaptor.



NOTE

Store the stick blender at room temperature to maintain battery health and longevity. Extreme temperatures can affect the performance and lifespan of lithium-ion batteries.

USING YOUR BREVILLE STICK BLENDER

1. Align the relevant attachment with the motor body.
2. Push the attachment onto the motor body until it locks into place.
3. Press and release the pressure speed control trigger to activate the LED screen. Press the trigger a second time to commence operation. Adjust pressure to change the speed.
4. Press and hold the the speed control trigger to operate continuously, or press and release in succession to PULSE, adjusting the speed as needed.
5. Detach the attachment by pressing both EJECT buttons on either side while simultaneously pulling the attachment away from the motor body.



NOTE

Do not operate the stick blender continuously for more than 1 minute. Allow the motor to rest for 1 minute between each use.



NOTE

Never mix dry, thick, or heavy mixtures for more than 30 seconds. Stop the operation and stir the ingredients before continuing.

FOOD PREPARATION CHART

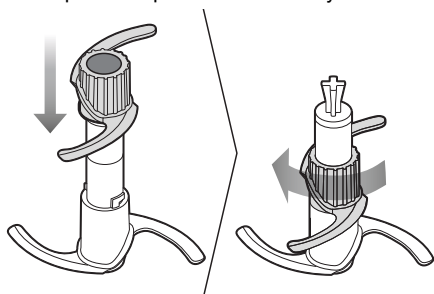
FOOD TYPE	ATTACHMENT TYPE	RECOMMENDED QUANTITY AND USE
Drinks such as milkshakes and smoothies	Blending	Example: Banana milkshake Add 100g bananas and 500ml milk to the blending jug. Use chilled milk. Use mid to maximum speed for 30 seconds
Soups, dips, purees	Blending	Example: Pumpkin soup Place 1 clove garlic, 200g brown onion (chopped), 300g pumpkin (diced), 50g potato (diced), and 275ml vegetable stock in a pot. Boil rapidly for 2 minutes then decrease to a simmer for 15 minutes until vegetables are tender. Cool contents to room temperature before pouring into blending jug. Use mid to maximum speed for 1 minute or less. Allow the motor to rest between each use. Add and stir through 50ml cream. Season to taste.
Carrot (raw)	Blending	Maximum 300g, pre-cut into 2cm cubes, with 600ml water. Use mid to maximum speed for 30 seconds or less. Allow the motor to rest between each use
Cream, egg whites, light batters	Beaters	Maximum 250ml cream or 150g egg whites with 150g caster sugar and 150g icing sugar. Use mid to maximum speed for 1 minute or less for cream and up to 15 minutes for meringue, ensuring rest for 1 minute between each 1 minute period of use.
Raw onion or garlic	Chopping bowl	Maximum 200g, pre-cut into 2cm cubes. Use maximum speed for 10-20 seconds.
Nuts (almonds, walnuts etc)	Chopping bowl	Maximum 200g. Use mid to maximum speed for 20-30 seconds.
Meat (boneless beef, lamb, chicken, fish etc)	Chopping bowl	Maximum weight 150g, pre-cut into 2cm cubes with all bones and sinew removed from the meat. Use mid to maximum speed for 10-15 seconds.
Mashed potatoes	Masher	Example: Mashed potatoes Add 2x medium cooked potatoes (approx. 150-170g each) pre-cut into 2cm cubes, 100ml cream, and 1 tbsp. butter into the blending jug. Use mid to maximum speed for 1 minute at a time. Allow the motor to rest between each use. For larger quantities, use mixing bowl large enough for ingredients to move around while mashing. Season to taste.

CHOPPING BOWL ATTACHMENT TIPS

- This chopper is designed for either 2-blade (dual) or 4-blade (quad) operation. The dual blades are attached to the lower spindle and can be used alone or with the top blade for quad blade operation, depending on the chopping requirements.
- Recommended maximum quantity in the chopping bowl for meat (beef etc.) is 150g. Meat should be cut into 2cm cube pieces with bones and sinew removed, before placing in the chopping bowl.

Quad Blade Assembly

1. Place the removable spindle with the lower blades upright on the bench.
2. Carefully place the removable top blades onto the spindle.
3. Turn the top blades clockwise to secure and complete the quad blade assembly.



WARNING

The blade assembly is extremely sharp. Handle with care and only lift from the shaft using the centre part. Do not touch the blades.

4. Place the assembled blades onto the metal pivot pin in the base of the chopping bowl.

BLENDING ATTACHMENT TIPS

- For best results, use the blending attachment for making smoothies, purees, and soups.
- Move the stick blender in an up-and-down motion to ensure even blending.
- This stick blender is not designed for use over a heat source. To use the stick blender in a saucepan, first remove the pan from the heat source. Ensure that there is no burning on the bottom of the pot as this will be incorporated into

the ingredients when blending begins.

- This stick blender is not intended to chop ice. Add ice to beverage after blending.
- Liquid is required to puree foods. Add cooking liquid, broth, juice, milk, or cream until desired pureed consistency is reached.
- To achieve best blending results and to reduce splattering (especially hot foods or liquids), use deep, tall containers.
- The silicone lid can also be used as an anti-slip mat by fitting it underneath the base of the blending jug.
- Do not process hot or boiling liquids or ingredients in the blending jug – allow liquids or food to completely cool down before placing into the blending jug.

BEATER ATTACHMENT TIPS

- The beater attachment is ideal for whipping cream, aerating eggs or whisking meringues. Ingredients should only fill 1/3 of the blending jug or mixing vessel.
- Start with a lower speed to avoid splattering.
- Heavy loads e.g. biscuit dough may cause the beaters to over-spin and damage the appliance. If the beaters over-spin, cease operation as this will damage the beater sockets. Dislodge the mixture from the beaters using a spatula and stir ingredients.

MASHER ATTACHMENT TIPS

- The masher attachment is perfect for preparing mashed potatoes, toddler food, or other soft vegetables.
- Use a mixing bowl that is large enough for the ingredients to move around while mashing.
- Due to high power consumption, it is recommended to fully charge the appliance prior to using the masher attachment.

SILICONE BRUSH ATTACHMENT TIPS

- The silicone brush attachment is best suited to cleaning bottles, jars, and other containers.
- Do not apply pressure to the stick shaft when cleaning oddly shaped bottles.
- Move the brush in a circular motion to ensure thorough cleaning.



CARE & CLEANING

Before cleaning, ensure the stick blender is turned off and not connected to the USB cable and USB power adaptor. Allow all attachments to cool completely before disassembling and cleaning.

1. Remove the attachments and wash them in hot soapy water. Do not immerse the motor body in water or any other liquid.
2. Wipe the motor body with a damp cloth and dry with a lint-free cloth.
3. The only dishwasher safe components are the beaters (separated from plastic beater attachment), silicone brush (separated from plastic silicone brush attachment), and blending jug lid. Do not place any other parts in the dishwasher.
4. Dry all parts thoroughly before storing.



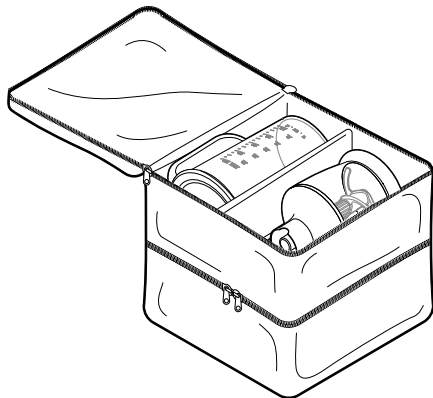
NOTE

Do not wash or soak the motor body in water or any other liquid. Do not allow water or any other liquid to enter the motor body as this may result in damage or injury.

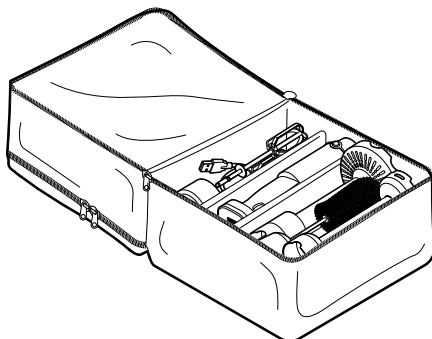
STORAGE

Before storing, ensure all parts of the stick blender and accessories are clean and dry.

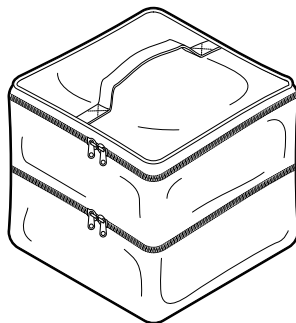
1. Place the blades inside the chopping bowl and lid.
2. Place the chopping bowl and the blending jug, in the top compartment of the storage bag.



3. Position the heavier parts in the bottom compartment of the storage bag with the motor body in the middle section and the accessories on either side of the separators.



4. Ensure the storage bag is placed in a cool and dry location.



BATTERY DISPOSAL

Before disposing of the stick blender, the lithium-ion battery must be removed from the appliance. The battery in the stick blender is not replaceable by the end user.

Different regions have specific regulations regarding the disposal of lithium-ion batteries. Check your local waste management authority or environmental agency for guidelines on lithium-ion battery and e-waste collection.

DO NOT DISPOSE OF BATTERY IN YOUR HOME RUBBISH BINS.



TROUBLESHOOTING

Problem	Possible Cause	What to Do
Stick blender is not turning on	<ul style="list-style-type: none">• Appliance has not been activated (only applicable for first time use).• Battery is depleted.• Motor unit is not properly attached.• Motor body is attached to the USB cable and power outlet.	<ul style="list-style-type: none">• Connect motor body to USB power adaptor (not included) using the provided USB cable to activate unit before first use.• Ensure the battery is fully charged. Connect the provided USB cable to a power source and charge until the LED screen indicates full charge.• Check that the motor unit is fitted correctly and securely attached to the desired attachment.• Disconnect the USB cable from the motor body.
LED Screen is not turning on	<ul style="list-style-type: none">• Appliance has not been activated (only applicable for first time use).• Battery is depleted.• Faulty USB cable or USB power adaptor (not included).	<ul style="list-style-type: none">• Connect motor body to USB power adaptor (not included) using USB cable to activate unit before first use.• Ensure the battery is fully charged. Connect the provided USB cable to a power source and charge until the LED screen indicates full charge.• Ensure the power outlet is functioning correctly or try a different outlet.
Attachment stops or motor slows down during operation	<ul style="list-style-type: none">• Battery is low.• Overload protection is activated.• Attachment is blocked or jammed.	<ul style="list-style-type: none">• Check the battery status on the LED screen. Recharge if necessary.• The maximum load capacity may have been exceeded. Remove some of the ingredients. Allow the motor body to cool down for 5-10 minutes if it overheats and continue operation.• ALWAYS disconnect the attachment from the motor body before checking the attachment is free of obstructions and properly assembled.
Attachment does not fit properly	<ul style="list-style-type: none">• Debris or obstruction in the attachment connector.	<ul style="list-style-type: none">• Clean the attachment connector and ensure it is free of debris.



NOTES



NOTES

Breville Customer Service Centre

Australian Customers

Phone: 1300 139 798

Web: www.breville.com

New Zealand Customers

Phone: 0800 273 845

Web: www.breville.com

Breville®

Breville, the Breville Logo and All in One are trademarks of Breville Pty Ltd ("Breville") and Breville's products are distributed in Australia and New Zealand under license.
Copyright Breville Pty. Ltd. 2025.

Due to continued product improvement, the products illustrated/photographed in this booklet may vary slightly from the actual product.